

VEGFB Antibody
Rabbit mAb
Catalog # AP92403**Specification**

VEGFB Antibody - Product Information

Application	WB
Primary Accession	P49765
Clonality	Monoclonal
Other Names	
VEGF B; Vegfb; VEGFL; VRF;	
Isotype	Rabbit IgG
Host	Rabbit
Calculated MW	21602 Da

VEGFB Antibody - Additional Information

Dilution	WB~~1:1000
Purification	Affinity-chromatography
Immunogen	A synthesized peptide derived from human VEGFB
Description	Growth factor for endothelial cells. VEGF-B167 binds heparin and neuropilin-1 whereas the binding to neuropilin-1 of VEGF-B186 is regulated by proteolysis.
Storage Condition and Buffer	Rabbit IgG in phosphate buffered saline , pH 7.4, 150mM NaCl, 0.02% sodium azide and 50% glycerol. Store at +4°C short term. Store at -20°C long term. Avoid freeze / thaw cycle.

VEGFB Antibody - Protein Information**Name** VEGFB**Synonyms** VRF**Function**

Growth factor for endothelial cells. VEGF-B167 binds heparin and neuropilin-1 whereas the binding to neuropilin-1 of VEGF-B186 is regulated by proteolysis.

Cellular Location

Secreted. Note=Secreted but remains associated to cells or to the extracellular matrix unless released by heparin

Tissue Location

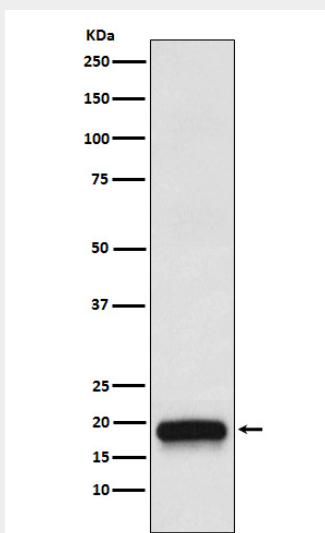
Expressed in all tissues except liver. Highest levels found in heart, skeletal muscle and pancreas

VEGFB Antibody - Protocols

Provided below are standard protocols that you may find useful for product applications.

- [Western Blot](#)
- [Blocking Peptides](#)
- [Dot Blot](#)
- [Immunohistochemistry](#)
- [Immunofluorescence](#)
- [Immunoprecipitation](#)
- [Flow Cytometry](#)
- [Cell Culture](#)

VEGFB Antibody - Images



Western blot analysis of VEGFB expression in 293T cell transfected with VEGFB recombinant protein.